



St. Thomas Road

2 Bedroom | 2 Reception | House - Mid Terrace

Council Tax Band: A | Current EPC Rating: C

Proudly presented by



www.highgatehomes.co.uk | 01772 651165 | sales@highgatehomes.co.uk

100 St. Thomas Road, Preston, PR1 6AX

Asking price £145,000

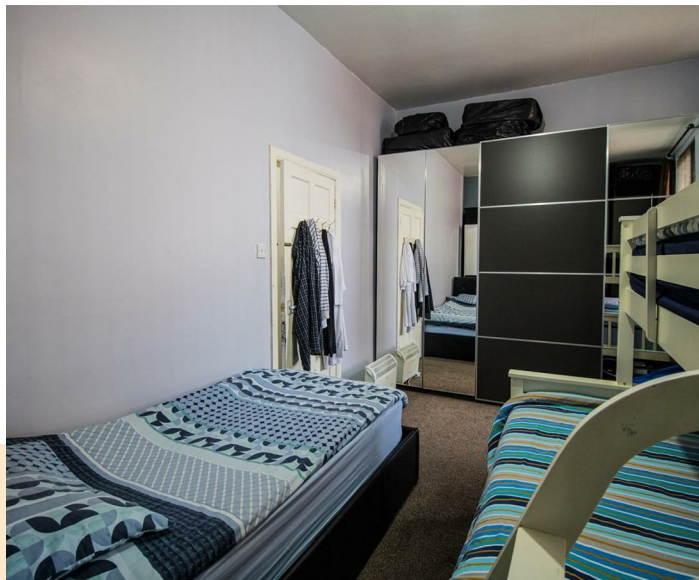
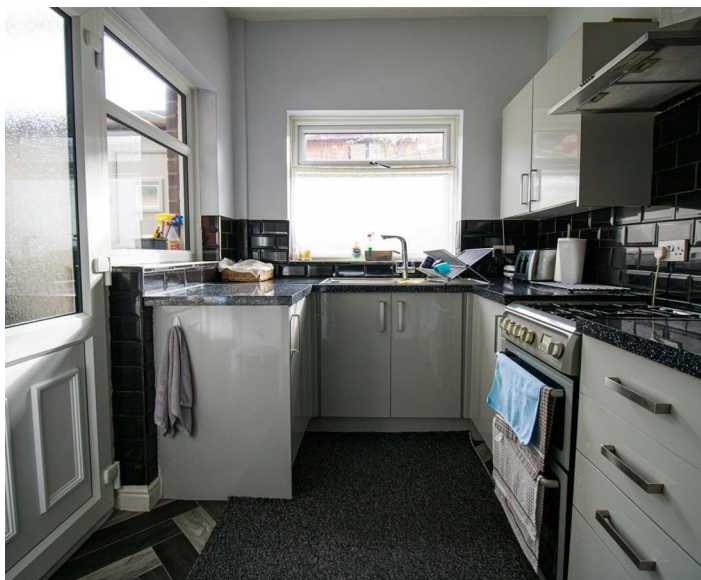
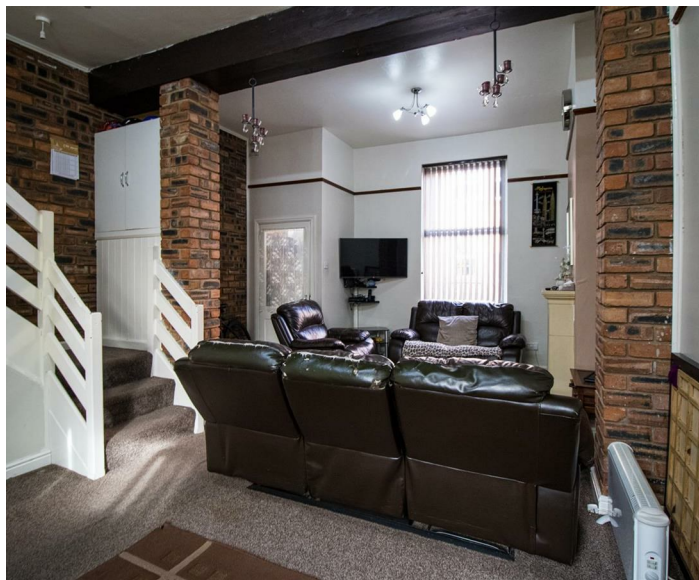
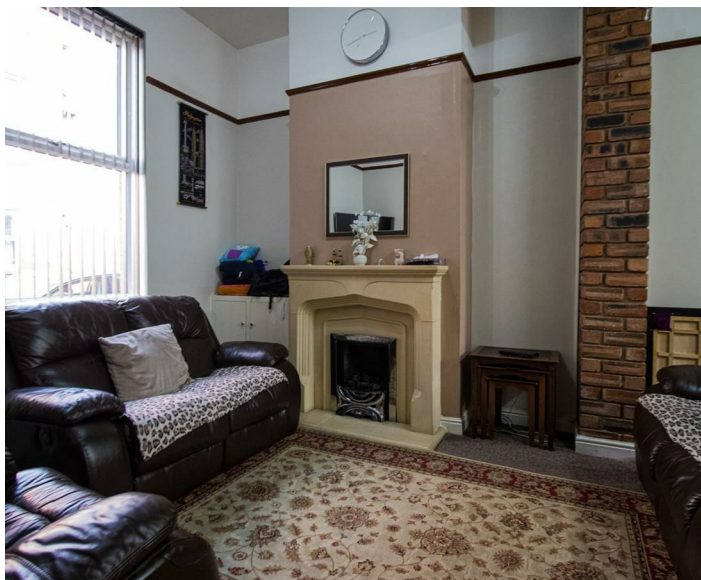
Nestled on the charming St. Thomas Road in Preston, this delightful mid-terrace house presents an excellent opportunity for those seeking a comfortable and inviting home. The property boasts two well-sized bedrooms, perfect for families, couples, or individuals looking for extra space.

Upon entering, you are greeted by two reception rooms that offer versatility for your living arrangements. Whether you envision a cosy lounge for relaxation or a vibrant dining area for entertaining guests, these spaces can be tailored to suit your lifestyle.

The well-sized bathroom provides a practical and comfortable setting for your daily routines, ensuring convenience for all residents. The layout of the house is thoughtfully designed, making the most of the available space while maintaining a sense of homeliness.

Located in a desirable area, this property is not only a lovely home but also a gateway to the vibrant community of Preston. With local amenities, parks, and transport links nearby, you will find everything you need within easy reach.

This mid-terrace house on St. Thomas Road is a fantastic opportunity for anyone looking to invest in a property that combines comfort, space, and a prime location. Do not miss the chance to make this charming house your new home.



If you have any specific questions, please do not hesitate to get in touch on 01772 651165 or, sales@highgatehomes.co.uk

www.highgatehomes.co.uk | 01772 651165 | sales@highgatehomes.co.uk



FLOOR 1



FLOOR 2

GROSS INTERNAL AREA
 FLOOR 1 412 sq.ft. FLOOR 2 436 sq.ft.
 TOTAL : 848 sq.ft.
 SIZES AND DIMENSIONS ARE APPROXIMATE, ACTUAL MAY VARY.